

KEYBOARDBEE 1.00

Mobile Systems, Inc.



USER GUIDE

<http://www.mobi-systems.com/>

© Copyright Mobile Systems Inc, 2000-2002

All rights reserved. This manual and the programs referred to herein are copyrighted works of Mobile Systems, Inc.

The information in this document is a subject to change without notice.

Mobile Systems, Inc. accepts no liability for loss or consequential loss due to misuse or any defect or failure of the programs howsoever arising.

© 2000-2002 Mobile Systems Inc. KeyboardBee and KeyboardBee logo are trademarks or registered trademarks of Mobile Systems, Inc. in the U.S. and/or other countries. All rights reserved.

3Com, the 3Com logo, Palm Computing and HotSync are registered trademarks. Palm III, Palm IIIx, Palm V, the Palm III logo, the Palm IIIx logo, the Palm V logo and the Palm Computing platform logo are trademarks of Palm Computing, Inc, 3Com Corporation or its subsidiaries.

Acrobat and PDF are trademarks of Adobe. All other brands and product names may be trademarks or registered trademarks of their respective holders.

Version 1.00

June 2002

English

LICENSE AGREEMENT

***** Please read the entire agreement *****

This End-User License Agreement (the "Agreement") is a legal agreement between you ("Licensee"), the end-user, and Mobile Systems Inc. ("Mobile Systems") for the use of the QuickWrite software product ("Software"). By using this Software or any part of it, you agree to be bound by the terms of this Agreement. If you disagree to the terms of this Agreement, do not install the Software.

LICENSE AND DISTRIBUTION

The evaluation copy of this Software is free of charge for unlimited period of time. You must pay the license fee and register your copy to continue to use the Software and remove the nag screen. Until you purchase and register the product you will not be able to access additional databases provided by Mobile Systems Inc.

The evaluation copy is fully functional, except the nag screen that slows the start up process progressively every time you start the program. You are allowed to make as many copies of this evaluation version (in UNMODIFIED form) as you wish to distribute.

RESTRICTIONS

You may not nor permit anyone else to de-compile, reverse engineer, or disassemble, modify, or create derivative works based on the SOFTWARE or the documentation in whole or in part. You may not use the Software for any commercial purpose or public display,

performance, sale or rental. You may not use the Software to perform any unauthorized transfer of information (e.g. transfer of files in violation of a copyright) or for any illegal purpose.

No WARRANTIES

This software and any related documentation is provided "as is" without warranty of any kind.

Mobile Systems Inc. specifically disclaims all warranties, expressed or implied, including but not limited to implied warranties of fitness for any particular purpose and of merchantability.

LIMITATION OF LIABILITY

In no event will Mobile Systems Inc. be liable to you for any damages, including but not limited to any loss of data, lost profits, lost savings, commercial damage or other incidental or consequential damages arising out of the use or inability to use this program directly or indirectly, or for any claim by any other party.

GETTING STARTED

WELCOME TO KEYBOARDBEE

KeyboardBee is a useful tool for improving text input on your handheld device. KeyboardBee presents some innovative features:

- Choice of 10 types of keyboards (the funady one - keys in hexagonal shape - is completely unique!);
- Compact interface dynamically placed on your display to keep important work areas and controls of the basic application visible and accessible;
- Auto repeat keyboard property;
- One tap easy start while using any other application
- Auto close when changing the basic application used;
- Auto detect of the best keyboard – system standard or KeyboardBee - according to the application used;
- Six languages keyboard support

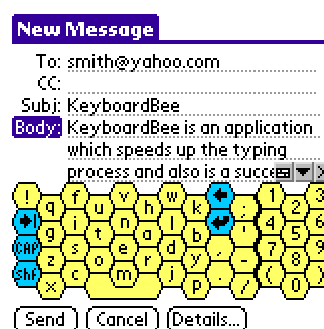
Keyboard is a typical keyboard program and works as an extension of HackMaster, X-master, TealMaster or other alternative application installed on your Palm. These are system upgrade managers that utilize an open standard for separately downloadable "Hack" files, and provides the means of managing them. Consequently, KeyboardBee cannot be installed on your device without any of these. In our distribution packs we have included the alternative **X-Master.prc**.

To activate KeyboardBee Hack you must first start the HackMaster and then switch on to KeyboardBee.

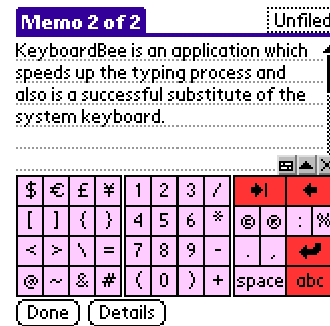
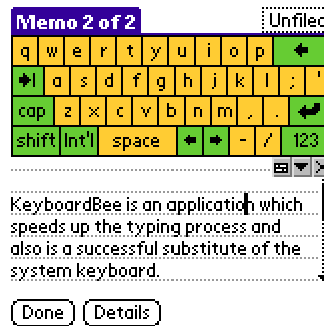
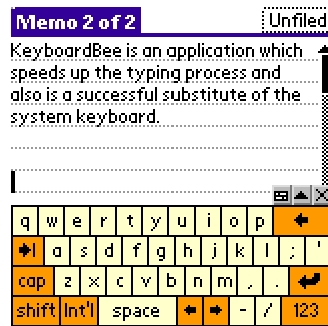
TYPES OF KEYBOARDS

KeyboardBee provides 5 different keyboard layouts, which allows you to easily type in the text you need, as well as makes it possible to customize the appearance of your keyboard according to your personal preferences and needs. The additional keyboards in Dutch, French, German, Italian and Spanish are useful tools for non-English speaking users and such availing of any of these languages.

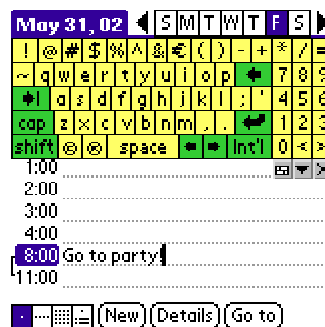
- **Funady** – unique honey-comb layout; the hexagon keys are specially designed in shape, size and order to minimize pen travel and optimize the speed of typing; excellent for one-hand typing.



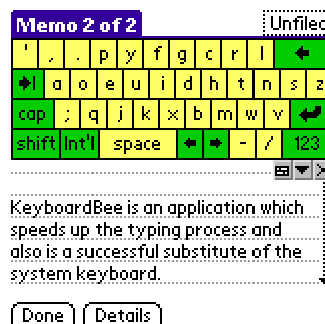
- System **standard** keyboard - similar to the keyboard on your Palm; to switch to the numeric keypad - tap the 123 key on the keyboard; to switch to International characters - tap **Int'l**.



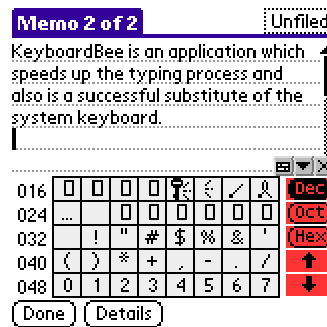
- **Qwerty69** - handy layout with numbers and letters; to switch to International characters - tap **Int'l**.



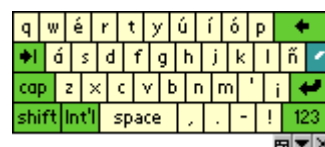
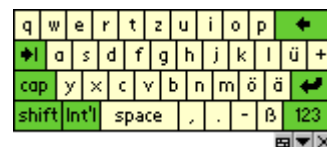
- **Dvorak** - tap 123 to switch to the numeric keypad (alternatively - tap 123 in the Graffiti writing area); the Int'l key will display the international characters.



- **Character Map** - presents symbols and their ASCII code in the octal, decimal and hexadecimal number systems. Tap the respective radio button to switch to the desired number system. Use the arrows to view next/previous set of symbols.



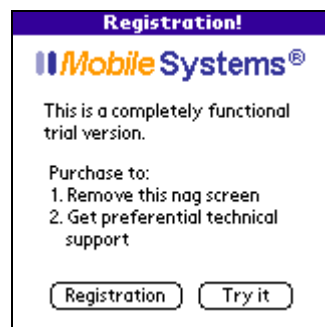
- Optional languages keyboards – in addition of the five English keyboard layouts, KeyboardBee supports Dutch, French, German, Italian and Spanish keyboards.



How To ORDER KEYBOARDBEE

KeyboardBee is a downloadable shareware product available for free evaluation or registration (for only \$19.95) at our home site:

www.mobi-systems.com



SYSTEMS REQUIREMENTS

Palm OS 3.1 or higher.

INSTALLATION AND UN-

INSTALLATION

INSTALLING KEYBOARDBEE USING WINDOWS BASED COMPUTER

1. Uninstall from you device any other language versions of this program.
2. Download KeyboardBee (.zip) into the Add-on folder in your Palm Desktop directory on your computer and expand the .zip file.
3. Double-click the Palm Desktop icon on your desktop.
4. Click Install. (Tip: You can also access the Install Tool dialog by clicking on the .prc file).
5. From the User pop-up menu, select your user name.
6. Click Add.
7. When the Open dialog box appears, select KeyboardBee.prc and MSKeyboards.prc.

Note! KeyboardBee.prc will only work if you have a HackMaster installed on your Palm. In our distribution pack we have included an alternative - X-Master.prc. To download and buy HackMaster, go to www.daggerware.com.

8. Click Done to close the Install Tool window.
9. Perform a HotSync operation to finish the installation.

INSTALLING KEYBOARDBEE ON A MACINTOSH

1. Uninstall from you device any other language versions of this program.
2. Download KeyboardBee(.zip) into the Add-on folder in your Palm Desktop directory on your computer and expand the .zip file.
3. Double-click the HotSync Manager icon in the Palm folder.
4. From the HotSync menu, choose Install Handheld Files.
5. From the User pop-up menu, select your user name.
6. Click Add to List.
7. Select the Add-on folder from the popup menu.
8. Select KeyboardBee.prc and MSKeyboards.prc

Note! KeyboardBee.prc will only work if you have a HackMaster installed on your Palm. In our distribution pack we have included an alternative - X-Master.prc. To download and buy HackMaster, go to www.daggerware.com

9. Click Add File to add KeyboardBee.prc to the Install Handheld Files List.
10. Close the Install Handheld Files window.
11. Perform a HotSync operation to install KeyboardBee.prc on your Palm.

UNINSTALLING KEYBOARDBEE

1. From your Palm's main Application Launcher, tap the Menu button and select Delete from the drop down list.
2. Tap KeyboardBee.prc and then tap Delete.
3. Tap Yes to confirm you wish to remove the program.
KeyboardBee should no longer appear on your screen.

REGISTRATION

Why Register

A shareware KeyboardBee version is available for downloads, which is fully functional for an evaluation period of 15 days. After the expiration of the trial period, to continue using the application you must pay the license fee and register your software. Registering will remove the annoying nag screen. For further information and details about registration refer to www.mobi-systems.com

How To Register

After purchasing KeyboardBee's, a customer ID number and registration code are assigned to you. Enter your Customer ID or RegCode in the order form.

Upon receipt of these in Mobile Systems support department, **Unlock Key** will be e-mailed to you in 24 hours time.

Enter the Unlock Key in your program's registration screen.

Where To Find Your Customer ID/RegCode

From your Main Applications Launcher go to HackMaster and then choose KeyboardBee. Tap the plus on the right to proceed to KeyboardBee options screen and choose Register button.

The Unlock Key - What, Where And How

1. The Unlock Key is a combination of 4-4 letters and digits (e.g. **34C5-7B9E**) which is e-mailed to you after you submit your **Customer ID/RegCode**. To enter your Unlock key:
2. Type in your Unlock Key in the space provided in your KeyboardBee Registration screen.



The image shows a dialog box titled "KeyboardBee Registration" with a purple header bar. Inside the box, the text reads: "Pilot User Name: John", "Customer ID: Y8YY-6H5J-C9G2-Y81Y", and "Please Enter Unlock Key:" followed by a dotted line for input. At the bottom, there are "OK" and "Cancel" buttons, and a footer line that says "For technical support, email support@mobi-systems.com".

3. Tap on **OK** to continue or **Cancel** to abort the entry.

Make sure that you have typed your Unlock key properly!

For further help refer to

<http://www.mobi-systems.com/kbbec/user.php3>

or e-mail: support@mobi-system.com.

USER GUIDE

WHAT KEYBOARDBEE CAN DO FOR YOU

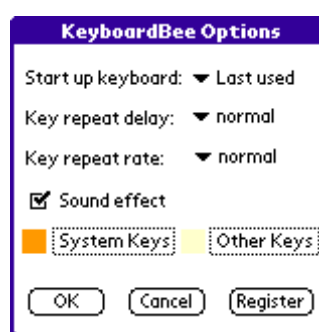
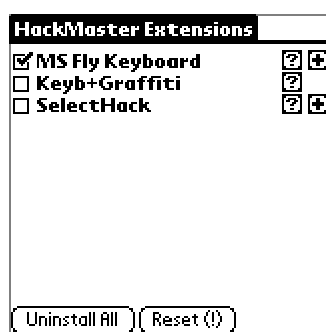
KeyboardBee is an application, which speeds up the typing process. It is specially designed as an additional tool for any other Palm applications to make your data input easier without hiding work areas and menu options of the basic program used. KeyboardBee successfully overlaps the functions of the system keyboard but also provides useful advantages and solves the inconveniences of the basic keyboard.

- Can easily be started while using other application by tapping of a single key;
- Finds the best place on your display to situate the keyboard, without covering any of the fields and menu buttons of the basic Palm application you are working with;
- User-friendly interface that can be customized in different keyboard layouts and color schemes;
- Five languages support ;
- Automatic detection on start-up of the best alternative between KeyboardBee and the system keyboard according to the application used;

- Auto exit of KeyboardBee when you change the form or application used.

KEYBOARDBEE ACTIVATION

1. In your Main Applications Launcher start HackMaster.
2. Enable KeyboardBee check box to activate the Hack.
3. Tap the plus on the right to proceed to KeyboardBee options screen and set preferences.



SETTING PREFERENCES

Customize Your Keyboard Performance

1. Go to HackMaster|KeyboardBee and tap the plus on the right to proceed to KeyboardBee options screen.
2. Use the **Key repeat delay** and the **Key repeat rate** popup lists to select your preferred options.

- Key Repeat Delay

This option allows you to adjust the time that elapses before a character is repeated when holding down a key. Choose from the popup list - fastest, fast, normal, slow, and slowest.

Tap **OK** to confirm or **Cancel** to return to the original settings.

- Key Repeat Rate

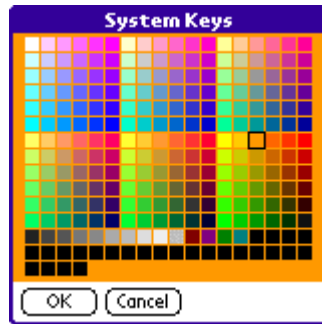
This option allows you to adjust how quickly characters repeat when you hold down a key. Choose from the popup list - fastest, fast, normal, slow, and slowest.

Tap **OK** to confirm or **Cancel** to return to the original settings.

Color

KeyboardBee automatically detects the display properties of your Palm device. This option allows you to add color to your keyboard.

1. Go to HackMaster|KeyboardBee and tap the plus on the right to proceed to KeyboardBee options screen.
2. Tap **Systems Keys** button and choose a color for your system keys from the color picker. Tap **OK** to confirm or **Cancel** to abort the action. Repeat these steps to add color to the rest of your keys, too.



Choose Your Startup Keyboard

This option allows you to select the keyboard you wish to use upon starting KeyboardBee. Apart from choosing by name, you can also select **Last Used** (the last used keyboard will be displayed) or **None** (the keyboard option will be disabled).

1. Go to HackMaster|KeyboardBee and tap the plus on the right to proceed to KeyboardBee options screen.
2. From the Start up keyboard popup list choose the preferred option.
3. Tap OK to confirm or Cancel to return to the original settings.

HOW TO START KEBOARDBEE

KeaboardBee can be easily started, while using any other application by simply tapping 123 corner in the graffiti area.

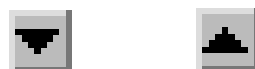
KEYBOARDBEE CONTROLS

KeyboardBee Controls are accessible through three control buttons, situated in the upper right or the down right corner of the keyboard, according to its current place in the form.

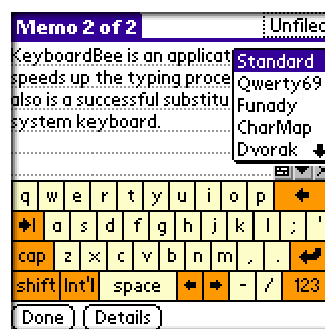


Choose Your Keyboard

Tap the second button from the KeyboardBee controls and choose the keyboard you wish to use.



1. Start KeyboardBee.
2. Tap the middle button and select the keyboard you wish to use.



Switch to System Keyboard

By tapping the first button from the group of three Keyboard control buttons, you can replace the keyboard with the standard system one.



Close KeyboardBee

After finishing work with KeyboardBee, the application can be closed by tapping the last button to close the application.

