

# **Xiino 3.4E User's Manual**

<b>1</b>	<b>INTRODUCTION</b> .....	<b>4</b>
1.1	What is Xiino? .....	4
1.2	Before Using Xiino .....	4
1.2.1	Warning, Caution .....	4
1.2.2	Terminology.....	5
<b>2</b>	<b>SETUP GUIDE</b> .....	<b>6</b>
2.1	Before Installing Xiino.....	6
2.1.1	Memory Requirement .....	6
2.1.2	Xiino Old version.....	6
2.2	Installing Xiino .....	6
2.3	Starting Xiino .....	6
2.3.1	Registration .....	6
2.4	Basic Screens .....	7
2.4.1	Browse Screen .....	7
2.4.2	Selection Screen.....	7
2.4.3	Preference Dialog Screen.....	7
2.4.4	Connect/Disconnect Dialog .....	7
2.4.5	Menu Bar .....	8
2.5	Setting Xiino Functions .....	8
2.6	Other Settings.....	12
<b>3</b>	<b>WEBSITE BROWSING</b> .....	<b>13</b>
3.1	Online Browsing.....	13
3.1.1	Connecting to an Internet Provider .....	13
3.1.2	Viewing a Web Page.....	13
3.1.3	Using the [Browse] buttons .....	14
3.1.4	Opening a Web Site .....	14
3.1.5	Inputting URL.....	15
3.1.6	Opening a Page Created by Frames .....	15
3.1.7	Opening an SSL website.....	16
3.1.8	Change of Icon Displays.....	16
3.1.9	Disconnecting the Communication Line .....	16
3.1.10	Landscape/Portrait Mode .....	17
3.2	Offline Browsing .....	17
3.2.1	Cache and Log .....	17
3.2.2	Browsing with the Browse Buttons .....	18
3.2.3	Browsing from the [Selection Screen].....	18
<b>4</b>	<b>USEFUL FUNCTIONS FOR EASY WEB BROWSING</b> .....	<b>19</b>
4.1	Bookmark .....	19
4.1.1	What is a Bookmark?.....	19

4.1.2	Registering Bookmarks.....	19
4.1.3	Editing Bookmarks .....	20
4.1.4	Deleting Bookmarks .....	21
<b>4.2</b>	<b>Cruise .....</b>	<b>21</b>
4.2.1	Automatic Cruise .....	21
<b>4.3</b>	<b>Xiino and Memo.....</b>	<b>22</b>
4.3.1	Browse Memo.....	22
4.3.2	Saving Web Pages in Memo .....	22
<b>4.4</b>	<b>Preview Browsing ( Saving the communication cost for Browsing ).....</b>	<b>22</b>
<b>5</b>	<b><i>DATA MANAGEMENT</i>.....</b>	<b>23</b>
<b>5.1</b>	<b>Viewing the Page Information .....</b>	<b>23</b>
5.1.1	[About This Page] Dialog .....	23
<b>5.2</b>	<b>Memory Management .....</b>	<b>23</b>
5.2.1	Clearing the Internal Cache .....	23
<b>5.3</b>	<b>Certificates.....</b>	<b>24</b>
5.3.1	Adding a Certificate .....	24
5.3.2	Unrecognized Certificate .....	24
5.3.3	View Certificate .....	24
5.3.4	Deleting a Certificate .....	25
<b>6</b>	<b><i>Others</i> .....</b>	<b>25</b>
<b>6.1</b>	<b>Trouble shooting .....</b>	<b>25</b>
<b>6.2</b>	<b>Further information.....</b>	<b>25</b>
<b>7</b>	<b><i>End User License Agreement</i> .....</b>	<b>26</b>

## **1 INTRODUCTION**

### **1.1 What is Xiino?**

Xiino is a web browser for the PalmOS™4&5. When your Palm™ device is connected to the Internet, you can browse a website or download information.

#### **Browsing Various Web Sites with ease...**

When you browse a website that was created for viewing on a desktop PC, Xiino automatically converts the text layout and picture size to fit the Palm™ device screen. Xiino makes web browsing with Palm™ device almost as good as doing it on computers in your home and office.



#### **Cautions**

**Xiino converts the Frame and Table to fit the Palm™ device screen by the original methods. Therefore, Xiino can not handle JavaApplet and some JavaScript.**

#### **Useful functions to reduce communication time...**

Xiino features offline browsing which enables you to access a web page saved in the Palm™ device internal cache even when you are not connected to the Internet. Xiino's automatic cruise function downloads a pre-specified web page and saves it to the Palm™ device internal cache. These functions facilitate operations and reduce communication time.

#### **Scroll-Dial & Memory Card**

Xiino copes with Scroll-Dial(Jog-Dial) & Memory Card\*1.

You can operate Xiino one-handed with Scroll-Dial, make backup copy of cache data and exchange with it between other Palm™ devices.

\*1 Xiino supports SD card and MemoryStick card only.

### **1.2 Before Using Xiino**

This manual is for Xiino 3.3 English language version. Xiino is a web browser for the Palm™ device. Please refer to the operation manual of your Palm™ device for details on how to connect your Palm™ device to communication tools, such as modem, installation of application software, and Internet connection configurations.

#### **1.2.1 Warning, Caution**

##### **Warning: Please read the End User License Agreement**

Before using Xiino, please read the End User License Agreement for all software. After consenting to the clauses of the Agreement, install all software. The End User License Agreement is included at the end of this manual.

##### **Caution**

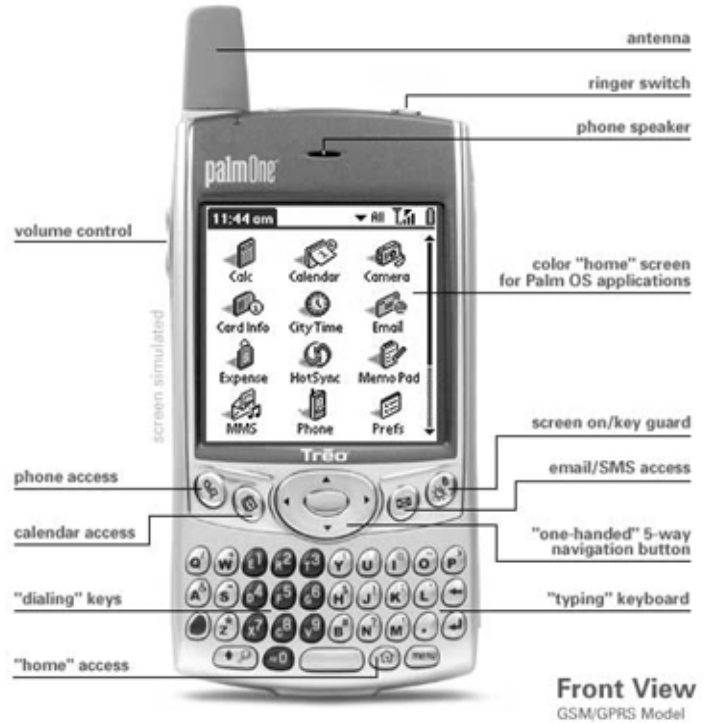
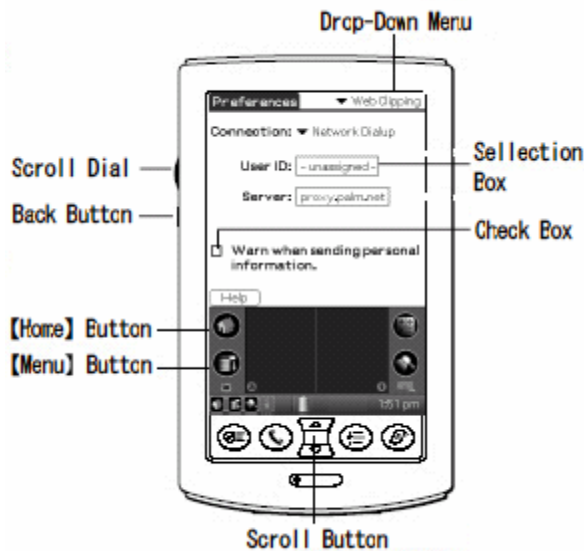
- The copyright of this manual belongs to MOBIRUS, Inc.
- Copy of this software or manual in whole or in part is forbidden.
- The software and manual can be changed without prior notice.
- We do not take any responsibility for the results of using the software and manual.

##### **Trademark**

Palm, HotSync are trademarks of Palm Computing, Inc. or its subsidiary and PalmOS is a trademark of Palm, Inc. or its subsidiary.

Other brands and product names maybe trademarks of each owner.

## 1.2.2 Terminology



### Tap

To touch the screen with the Stylus tip momentarily is called "tap". Tap to *Set / Select* operations.

### Drag

To draw the Stylus tip along the screen slowly is called *drag*. You drag to *Move* an item on the screen.

### Drop-Down Menu

An item with a down arrow on the left is called a *Drop-Down Menu*. When you tap the down arrow, a menu appears.

### Check Box

The box displayed for selecting an item on the setting screen is called a *Check Box*. When you tap the *Check Box*, a check mark appears in the box which means that the item is selected.

### Selection Box or Box

The dotted-line frame displayed for selecting an item on setting screens is called a *Selection Box* or *Box*. When you tap the box, the screen is switched or the box turns

blue. When the box is blue, it means that the item is selected.

### Scroll Button

The buttons vertically aligned at the lower part of the Palm™ device are called *Scroll Buttons*. You use these buttons to move the cursor or to scroll the screen.

### Scroll Dial(Jog Dial)

Generally, the Dial to mount on the side of the Palm™ device is called Scroll Dial(Jog Dial). You can use this dial for same function as Tap and Scroll Dial by one-hand.

### Back Button

The Button to cancel Set/Select operations is called Back Button.

### [Menu] Button

The button is to display application menu. By tapping the [Menu] button, a menu appears on the upper portion of the screen.

### [Home] Button

The button is to display the [Application Startup] screen. By tapping the [Home] button, the [Application Startup] screen appears.

## **2 SETUP GUIDE**

### **2.1 Before Installing Xiino**

#### **2.1.1 Memory Requirement**

To install Xiino requires at least 1,000Kb of free memory capacity. To check how much memory your handheld has, from the [Home] screen, select [Info...] option from [App] menu. Tap [Size] button, and you will see how much memory is left on your handheld. Remove unnecessary application software and data in order to ensure memory availability to install Xiino.

#### **2.1.2 Xiino Old version**

For those who have old versions of Xiino (ver.1.x) installed in handheld, it is possible that old versions of Xiino (except ver.3.0) and this version can be installed in the handheld at the same time.

### **2.2 Installing Xiino**

Xiino is a web browser application software which operates on Palm™ Powered (PalmOS™ 4 and PalmOS™ 5 only) handhelds.

Xiino is not installed in the Palm™ device that you have purchased. To use Xiino, please refer to the [Readme] text file to install Xiino.prc application software.



#### **Cautions**

**YOU CANNOT TRANSFER OLD VERSIONS OF XIINO( XIINO1.x AND INCLUDING PALMSCAPE) DATA INTO THIS VERSION.**

### **2.3 Starting Xiino**

To start up Xiino, tap the [Home] button on the Palm™ device to view the [Application Launcher] screen. By tapping the [Xiino] icon, the Xiino startup screen appears.



#### **2.3.1 Registration**

When Xiino is launched from the [Application] screen for the first time, the [Information] dialog appears. This dialog also appears during the first 30 DAYS from initial installation of Xiino.

Once you have purchased Xiino, you will receive a Registration code. Enter this code into the [Reg. Code] field.

If you are evaluating Xiino at this time, tap the [CANCEL] button and you will be led to the Xiino main screen. Note that evaluation is for a period of **30 days**.

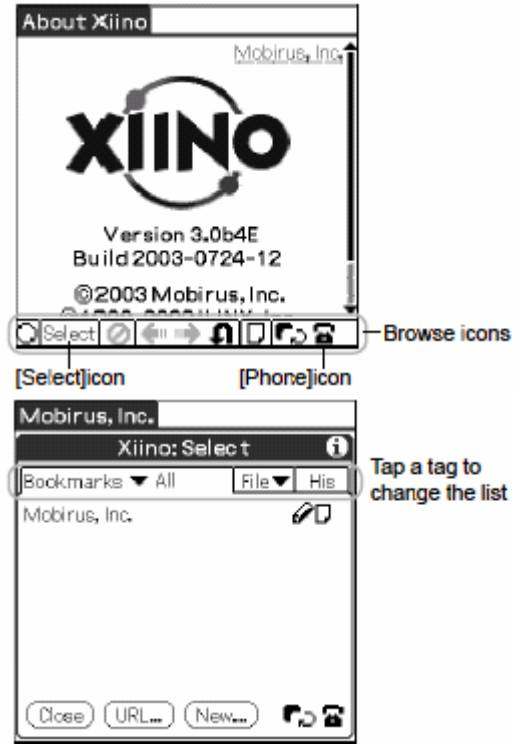
## 2.4 Basic Screens

### 2.4.1 Browse Screen

The browse screen displays web pages. The Browse icons displayed at the lower part of the screen are used to perform the main operations such as displaying web pages. The Browse icons may vary depending on the communication status.

#### For Treo

To press space key, focus jump to the Browse Icon.



### 2.4.2 Selection Screen

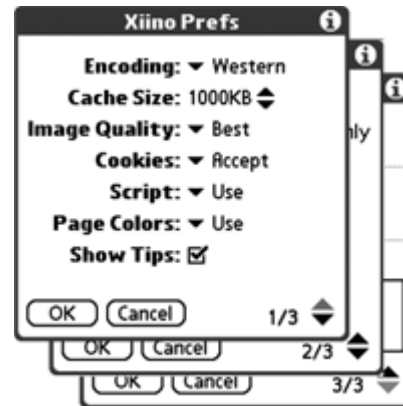
Tapping the [Select] icon on the [Browse] mode brings you to the [Selection] mode. This mode is for managing data stored in the Palm™ device internal cache, such as [Bookmarks], [File] and [History].

Use the right/left buttons on the 5-way navigation control to focus on Tag and the buttons at the bottom of the window. Use the up/down buttons on the 5-way navigation control to select from the listed items.

### 2.4.3 Preference Dialog Screen

Select [Prefs...] in the [Options] menu to open [Prefs dialog]. This dialog is for configuring Xiino. Notice that there are 3 pages.

Use the right/left buttons on the 5-way navigation control to move the page contents. Use the up/down button on the 5-way navigation control to move the focus within the page.



### 2.4.4 Connect/Disconnect Dialog

Tapping the [Phone] icon on [Browse] mode opens the [Connect/Disconnect] dialog. This screen is for connecting and disconnecting the network.



Connect Dialog



Disconnect Dialog

## 2.4.5 Menu Bar

From the Browse screen, tap the [Menu] button to display the menus.

- (1) Page: Functions for pages
- (2) Edit: Text control
- (3) Option: Setup menu for Xiino

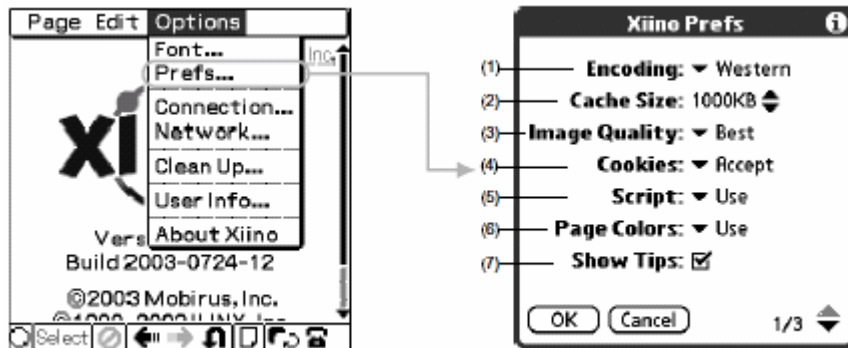


## 2.5 Setting Xiino Functions

The [Prefs] dialogs are used to perform the connection settings for the Internet and the basic settings for displaying web pages.

### Prefs Dialog – Part 1

To open the Prefs dialog(Part1), tap the [Menu] button of the Palm™ device and the select [Prefs...] from the [Options] menu.



[Prefs] Dialog - Part 1

#### (1) Encoding (Text Code)

Select the language for displaying a web page. For example, to display web pages in German, select [Western].

#### (2) Cache Size

Set the cache size for storing web page data.

#### (3) Image Quality

To select [Preview], Xiino displays web pages with gray 4-bits graphic images, which results in reducing communication data and download time. And to select [Text Only], Xiino displays web pages without graphic images, which results in more reducing communication data and download time.

- *Best*  
Always display color 8-bits/16-bits graphic images in web pages.
- *Preview*  
Always displays gray 4-bits color graphic images in web pages. When you select [Load Images] in [Page] menu, the graphic images will be loaded.
- *Text Only*

Display text data on the web page without graphic images. When you select [Load Images] in [Page] menu, the graphic images will be loaded.

#### (4)(5) Cookies & Script

Xiino has a security function that determines the possibility of danger from a network point of view and displays a warning message before accepting cookies issued by web sites or before downloading files from the web. Use the *Security Settings* dialog box to set the appearance of the warning display and to execute or suspend process.

#### (6) Page Colors

Due to a limitation of the Xiino display capacity, some letters may not be visible on some web sites. In that case, you set this up as "Do not Use", Xiino will display the contents ignoring the background color configuration.

#### (7) Show Tips

When an icon or link is tapped, its description pops up



## Settings and Security Level

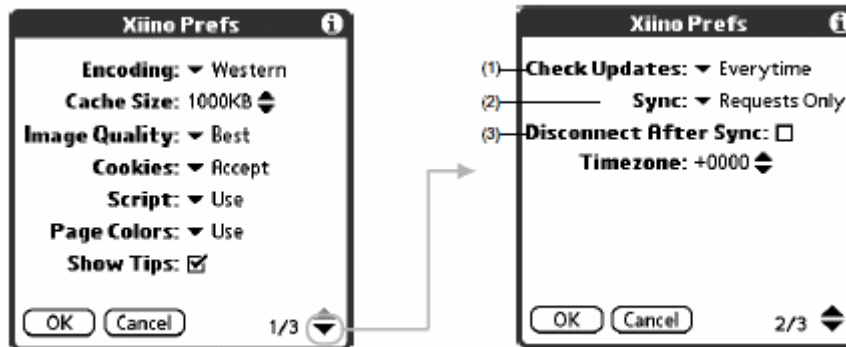
Updated Items	Action	Security Level		
		Warning	Safe	Safer
Cookies	Accept Cookies	Accept	Confirm User	Reject
		Accepts cookie automatically without warning.	Confirms users to accept cookie with warning.	Does not accept cookie.
Script	Execute Script	Use	/	Do Not Use
		Warning message displayed before script is executed.		Script is not executed.

### Scripts

Scripts function is supported by Xiino. The type of script is Javascript. When a website is accessed with Javascript feature, the status in the bottom of the screen will indicate "Executing Script..."

### Prefs Dialog – Part 2

To open the Prefs dialog(Part2), tap the down arrow on the lower right corner of Prefs dialog(Part1) till you reach 2/3



[Prefs] Dialog - Part 2

#### (1) Check Updates

Sets the order of priority for [Cache] data when you access a web page.

- **Everytime**  
Always access the web server and download the latest web page.
- **Use Cache**  
Displays first any old web data that is still stored in [Cache]. If there is no old web data in [Cache], the web server is accessed to download the latest web page.

#### (2) Sync

Sets the range for automatic cruise.

- **Queued Requests**  
Updates the cache data specified for action of Sync.
- **Queued Requests & Sync**  
Updates the bookmark and cache data specified for action of Sync.

#### (3) Disconnect After Sync

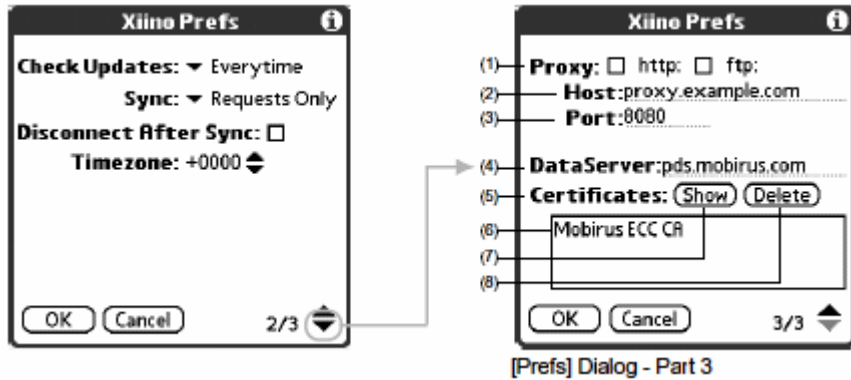
If this option is checked, the Internet connection is disconnected after Sync action.

#### (4) Timezone

Set the timezone where you are located. For example, the timezone in Japan is +0900.

**Prefs Dialog – Part 3**

To open the Prefs dialog (Part 3), tap the down arrow on the lower right corner of Prefs dialog(Part2) till you reach 3/3.



**(1)(2)(3) Proxy & Host & Port**

When the proxy is set, web pages are displayed faster. To use proxy, check the type of proxy (http or ftp) designated by your provider and enter the host address. The port number is normally set to [8080].

**(4) DataServer (Image proxy Server)**

Enter the image proxy server (called DataServer) here which is *pds.mobirus.com*. Check the information on MOBIRUS's support page at [<http://www.mobirus.com/en/>] if you have problems with the image proxy server.

**(5)(6) Certificates**

Lists the installed Certificates

**(7) [Show...] button**

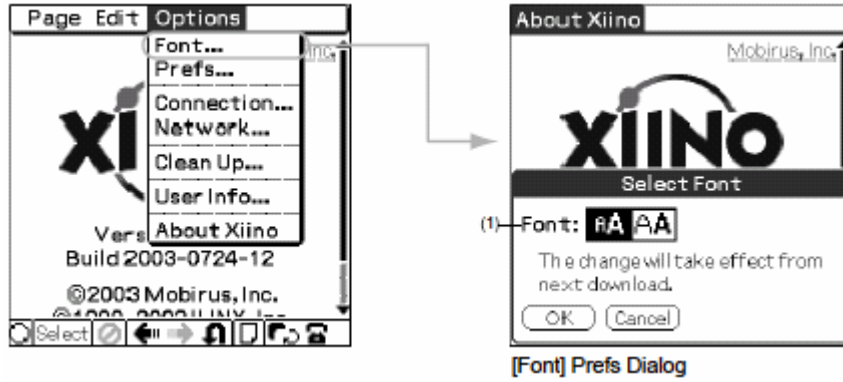
Displays the Certificate information from the list.

**(8) [Delete...] button**

To delete a certificate from the list, tap on the certificate name, and then tap [Delete...]

**Font Size Configuration**

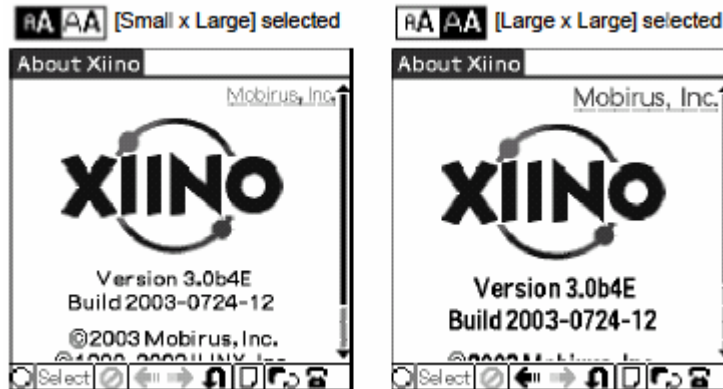
You may select the font size of the web site that you view.



**(1) Font**

The font that is highlighted is the size of the font that is set to view the web pages. To choose another font size, tap the one that is not highlighted. Tap [OK] to take the settings into effect. Tap the reload key to view the font size that has been changed.

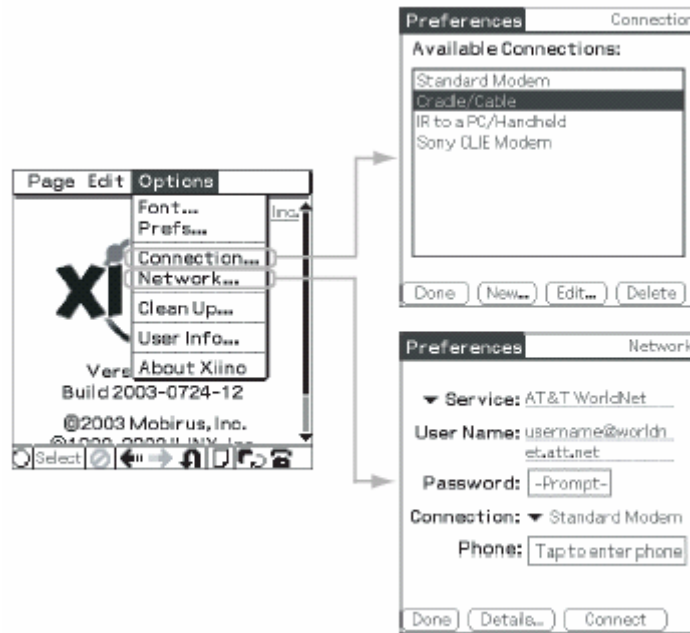
**View the difference of fonts**



## 2.6 Other Settings

### Settings for Internet Connection

To setup for dialup Internet connection, there are two places where you need to make the configuration – [Connection...] and [Network...] – which are found in the [Options] menu from the browser. [Connection...] contains modem setup, while [Network] contains the Internet dialup setup. Contact your Internet Service Provider or Carrier for further specific information on how to set up the dialup information.






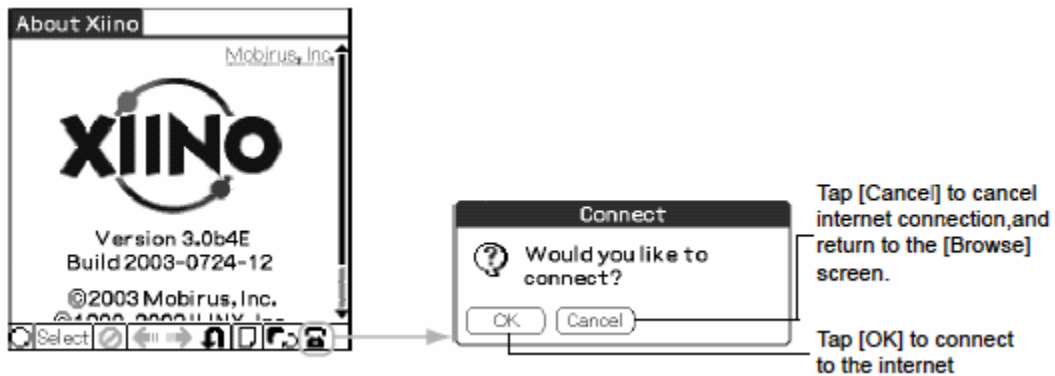
### 3 WEBSITE BROWSING

#### 3.1 Online Browsing

To view homepages on Xiino, it is necessary to establish an Internet connection. The following illustrates on how to open and view the MOBIRUS homepage.

##### 3.1.1 Connecting to an Internet Provider

Tap the [Phone] icon  from [Browse] mode to open the [Connection] dialog. By tapping the [Connect] button, this will begin establishing connection to your Internet Service Provider. Then the [Browse] screen reappears. The [Phone] icon is displayed as  when the connection is successfully established. By tapping the Sync button , the line will be connected to the Internet provider and the automatic sync function will start.



When there is no connection...

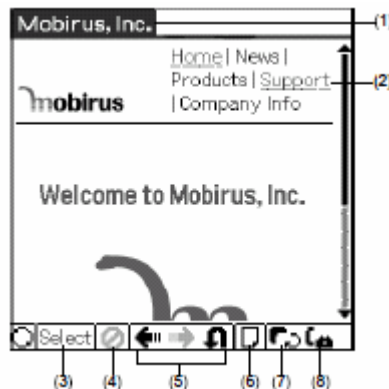
Confirm the following when a connection has failed

- Modem Setup: [Menu] -> [Option] -> [Connection]
- ISP Setup: [Menu] -> [Option] -> [Network]
- Xiino Setup: [Menu] -> [Option] -> [Prefs]
- Modem, telephone line connection, device hardware

##### 3.1.2 Viewing a Web Page

Open MOBIRUS's homepage.

When you select [About Xiino] from the [Options] menu, the Xiino startup screen appears. By tapping the [MOBIRUS Homepage] link on the upper right side of the screen, this will bring you to the MOBIRUS homepage.



**(1) Title**

Title of the web page displayed on the screen.

**(2) Hyperlinked Text**

Text that are underlined are hyperlinked text. When you tap here, the specified web page is opened.

**(3) [Select] button**

Opens the [Selection] mode

**(4) [Stop] button**

Stops the download of a web page.

**(5) [Browse] buttons**

Controls the displays of the web pages.

**(6) [Page Info] icon**

Displays information about the web page including URL and size.

**(7) [Sync] button**

Connects to the Internet and begins downloading web pages in sync mode.

**(8) [Phone] icon**

Connects to / Disconnects from the Internet.

### 3.1.3 Using the [Browse] buttons

Xiino saves web pages that you have accessed in cache. The sequence in which the pages were displayed is recorded in the [History] log. You can use the [Browse] buttons to display the [Cache] data in the sequence recorded in the [History] log.



Browse buttons

**← Back**

Displays the previous page

**→ Forward**

Displays the following page recorded in the [History] log.

**↻ Reload**

Displays the page again.

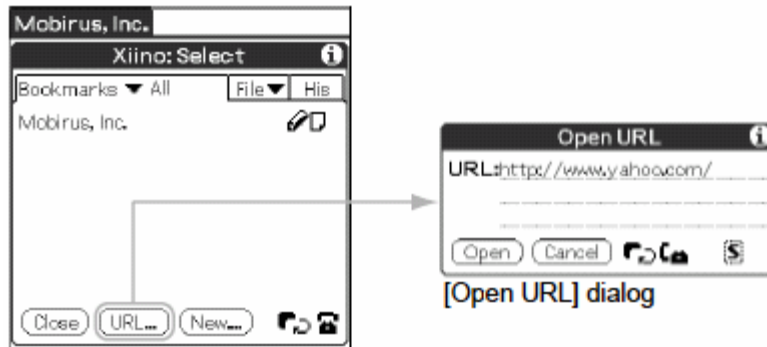
### 3.1.4 Opening a Web Site

When you tap an underlined text, or picture set for hyperlink, the specified page is opened.

URL of an HTML document	.html or .htm	Displays web pages
URL of a program	.prc, .pdb	Downloads programs and installs in Palm™ device

### 3.1.5 Inputting URL

To input the URL so as to view web pages, tap [Select] from the [Browse] screen, or tap [Menu] – [Open URL]. Then, tap [URL] which will open a new dialog screen [Open URL] . Enter the URL in this dialog screen. The symbol [S] stands for shortcut. Tap on [S] and you will see a list of shortcut items such as [.com] and [index.html].

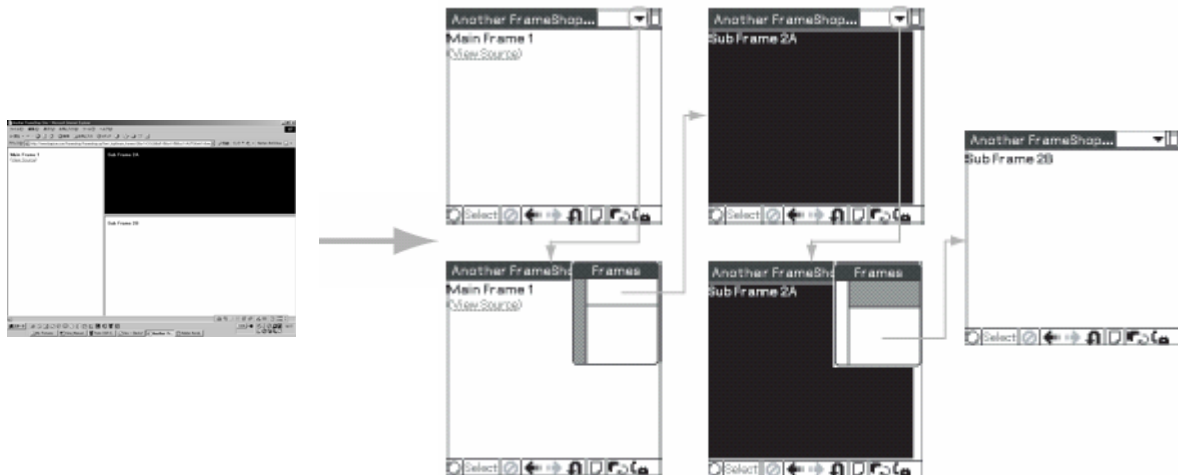


### 3.1.6 Opening a Page Created by Frames

Some websites on a PC have a list of menus on the left side of the window. And the corresponding information on the right side of the window changes in accordance with the selected menu. The method to divide a window into the units is called “frames” and then displays different information in each frame is called “frame display”. The frames are displayed in separate pages due to limitation of the screen.

#### Switching the Frame Display

1. The [Frame Icon] appears on the upper right corner of the [Browse] screen when you access a frame display page.
2. When you tap the [Frame Icon], the [Frame Image] window opens and then displays a framed graphic as divided on the PC window.
3. The shaded area is the corresponding frame that is currently displayed on the screen. To switch to other frames, tap the desired white portion.



### 3.1.7 Opening an SSL website

With SSL (Secure Sockets Layer), data transfer and accessing websites via Xiino ensures high security.

Communication is done by using the data enciphered between the Web sites which coped with Xiino and SSL so that the third person couldn't decode contents of communication.

Accessing SSL websites via Xiino uses data encryption method which makes it impossible for third party to decode contents during data transmission.


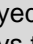
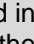
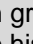



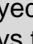
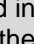
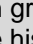
For example, SSL is implemented when credit card number is entered for online shopping.

- (1) Open an SSL website
- (2) You will notice that it is an SSL website when the [LOCK] icon appears on the upper right hand of the screen.


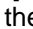


### 3.1.8 Change of Icon Displays

The icons to be displayed at the lower part of the browser screen change in accordance with the communication status.

<b>Offline Status</b> 	Select    Displayed in gray (when disabled) Displays the history log. (If there is no log record, these arrow symbols are displayed in gray and browsing is disabled) Offline status.
<b>Download Status</b> 	Select  10756 bytes... Download is cancelled when this icon is tapped. Displays the history log. (If there is no log record, these arrow symbols are displayed in gray and browsing is disabled) Online status.
<b>Online Status</b> 	Select    Displayed in gray (when disabled) Displays the history log. (If there is no log record, these arrow symbols are displayed in gray and browsing is disabled) Online status.

### 3.1.9 Disconnecting the Communication Line

Tap the [Phone] icon  from the [Browse] screen which will display the [Connection] dialog. When you tap the [OK] button, the communication line is disconnected and then the [Browse] mode reappears and the [Phone] icon appears as .





### 3.1.10 Landscape/Portrait Mode

Xiino supports models with the vertically/horizontally long display. The following is the explanation for operation.

#### When browsing the website at normal display mode

The data is displayed at normal mode of 320 x 320 pixels and the data of website that are on cash will also be 320 pixels in width. When you change to landscape mode display, the screen will extended but the data will not be shown on extended area. When landscape mode display is being selected and you select to display cash data in normal size, it will return from landscape display mode to normal one.

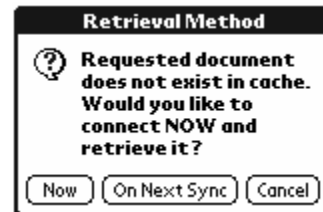
#### When browsing the website at landscape display mode

The data is displayed at landscape mode of 480 x 320 pixels and data of website that are on cash will also be 480 pixels in width. When you change to normal display mode, the data that were displayed at the extended area will not be shown. When normal display mode is being selected and you select to display cash data is 480 pixels in width (landscape mode size), it will change from normal display mode to landscape display mode automatically.

## 3.2 Offline Browsing

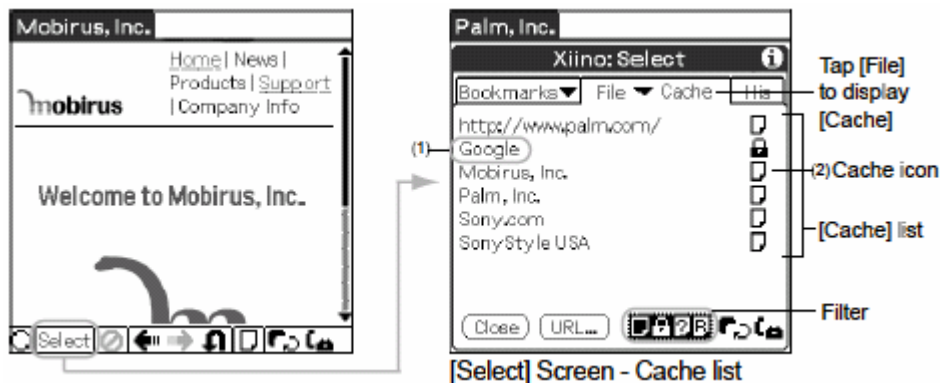
Xiino allows you to browse web pages using data stored in [Cache] even when the Palm™ device is in offline status (not connected to the Internet).

If you try to open a web page that does not have its data stored in [Cache], the [Retrieval Method] dialog will open. You can use this dialog to specify automatic data download to [Cache], to be performed when you connect to the Internet the next time.



### 3.2.1 Cache and Log

Xiino stores the pages you have browsed to your Palm™ device's internal cache as [Cache] data. It also records the sequence of pages you browsed as [History] log data.



#### 1. Title





Data name of [Cache]. If you tap the title when you are in offline mode, and if there is a data in [Cache], the [Browse] mode reappears and the corresponding web page is displayed. If there is no data in [Cache], the [Retrieval Method] dialog opens.

#### 2. Cache Icon

Displays the [Cache] status and result of the [Sync] function. When you tap this icon, detailed information about the data is displayed in the [About This Page] dialog.

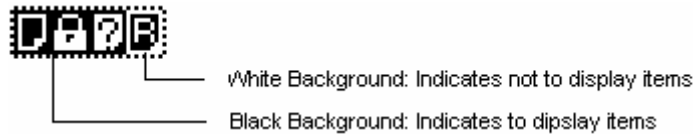
## Cache Icons

The document icon is different depending on the [Cache] status and result of [Sync] function.

Document Icon	Description	[Cache]
	Page stored in cache	Yes
	Page set with Lock Function	Yes
	Page already updated but unread	Yes
	Page with update requested	Yes
No icon	Page not stored in cache	No

## Filter Function

The [Cache] list displays a list of data shown with a specific [Document] icon. The data shown with the [Document] icons in reverse video (white on black background) at the bottom of the screen are displayed in the list. When you tap a [Document] icon in reverse video, this icon is displayed in normal video (black on white background) and the data corresponding to this [Document] icon is not displayed in the list.



## History Logs

To view the [History] log data, tap [Select] button and then, tap the [History] tab. The [History] log data is displayed according to the sequence when browsing the web pages.

### 1. Title

The title is the data name of the [History] log. When you tap the title, and if there is [Cache] in offline mode, the [Browse] screen reappears and the corresponding web page is displayed. If there is no data in [Cache], then the [Download] dialog is opened.






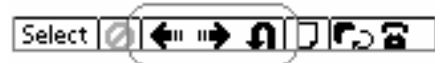
### 2. Document Icon

This displays the [Cache] status. When you tap this icon, the detailed information about the data is displayed in the [About This Page] dialog.

## 3.2.2 Browsing with the Browse Buttons




You can display the [Cache] data using the browse buttons corresponding to the [History] log sequence.

-  **Back:** Displays the previous [History] log.
-  **Forward:** Displays the next [History] log.
-  **Reload:** Reloads the [Cache] data.



## 3.2.3 Browsing from the [Selection Screen]

Tap [Select] mode and either select [Cache] from the [File] tab or [History] log tab to display the list of data.

If you tap the title of a page with   , the [Browse] mode display reappears and the data is displayed.

## 4 USEFUL FUNCTIONS FOR EASY WEB BROWSING

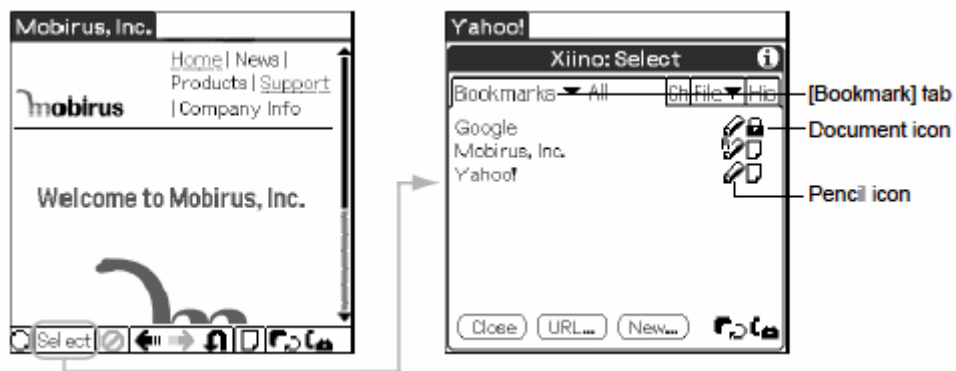
### 4.1 Bookmark

#### 4.1.1 What is a Bookmark?

Bookmark is a function for saving the URL of a web site. Once you have bookmarked a URL, you can browse the corresponding web page by simply tapping this title on the [Bookmarks] list without entering the URL.

#### Viewing the Bookmark List

Tap [Select] button and then tap the [Bookmarks] tab. Select the desired category from the dropdown menu of the [Bookmarks] tab. A list of bookmarks in the selected category will appear starting from the newest data in the order of registration.



#### Category

Displays category of bookmarks. You can set up to 15 categories.

#### Title

Displays the Bookmark title. If you tap the title when you are online, the [Browse] screen will reappear and the corresponding web page is displayed. If you tap the title when you are offline, the [Download] dialog will open. If there is a data in [Cache] in offline mode, the [Browse] screen reappears and the corresponding web page is displayed. If there is no data in [Cache], the [Download] dialog is opened.

#### [Pencil] Icon

Indicates the setting of the automatic cruise function of bookmark. When you tap the [Pencil] icon, the [Edit Bookmark] dialog for editing information about bookmarks will open.

#### [Document] Icon

Indicates the bookmark [Cache] status. The document icon descriptions are the same as those of [Cache].

#### [Close] button

Close [Selection] mode and returns to [Browse] screen.

#### [URL] button

Opens the [Open URL] dialog

#### [New] button

Opens the [Edit Bookmark] dialog.

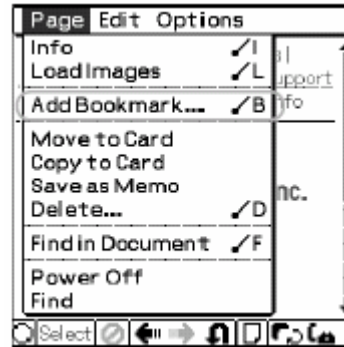
#### 4.1.2 Registering Bookmarks

You can register up to 32,000 bookmark entries. There are three ways to register a bookmark.

1. Registering from the [Edit Bookmark] dialog
2. Registering a web page being displayed
3. Registering a web page from the [History] log

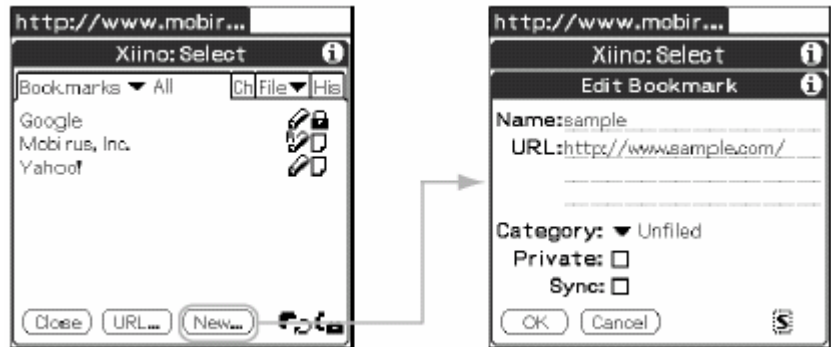
## Registering a web page being displayed

To register a web page currently displayed on [Browse] screen to a bookmark, tap [Add to Bookmark...] in the [Page] menu to open the [Edit Bookmark] dialog. Check the bookmark name and URL, and tap the [OK] button. Now, the bookmark is registered



## Registering from the [Edit Bookmark] dialog

Tap [New] while the [Bookmarks] list is displayed and open the [Edit Bookmark] dialog. Enter a bookmark name and URL and tap [OK]. Now, the bookmark is registered.



## Registering a web page from the [History] log

Tap the [Document] icon while the [History] log list is displayed to open the [About This Page] dialog. Tap [Add to Bookmark] to open the [Edit Bookmark] dialog. Check the bookmark name and the URL and tap the [OK] button. Now, the bookmark is registered.



### 4.1.3 Editing Bookmarks

The information associated with a bookmark is entered in the [Edit Bookmark] dialog. To open the [Edit Bookmark] dialog, open [Selection] mode and tap the [Bookmarks] tab. Then, tap the [Pencil] icon of the bookmark you wish to edit.



## 4.1.4 Deleting Bookmarks

To delete a bookmark, open the [Edit Bookmark] dialog and tap [Delete...] to display the [Delete Bookmark] dialog. Then, tap [OK].

To open the [Edit Bookmark] dialog, open [Selection Mode] and tap the [Bookmarks] tab. Then, tap the [Pencil] icon of the title of a web page you wish to delete.

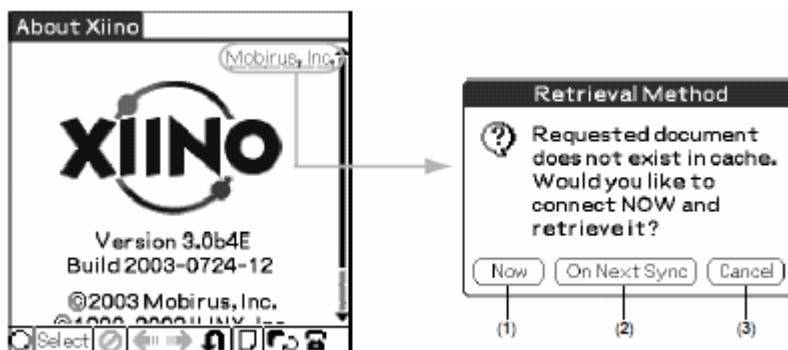
## 4.2 Cruise

### 4.2.1 Automatic Cruise

Xiino Automatic Cruise allows you to set websites, bookmarks in [Cache] for later download.

#### Cruise Configuration

Tap on a hypertext link to text when in offline mode. The [Retrieval Method] dialog appears.



**(1) Now**

This option will establish connection to the Internet, and download the website.

**(2) On Next Sync**

This option will download the website

during the next time an Internet connection is established.

**(3) Cancel**

Closes this dialog box

To download the websites set in [Cruise] mode, tap on the [Sync] icon

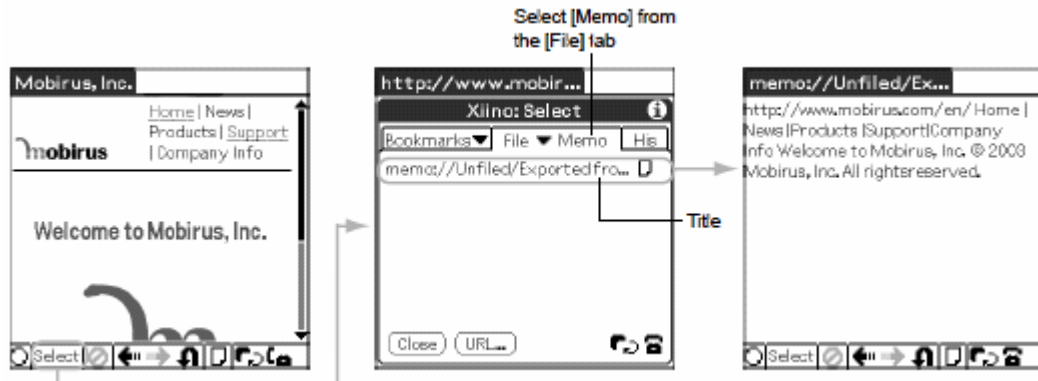


### 4.3 Xiino and Memo

Xiino allows you to browse data stored in your Palm™ device and save web pages in Memo.

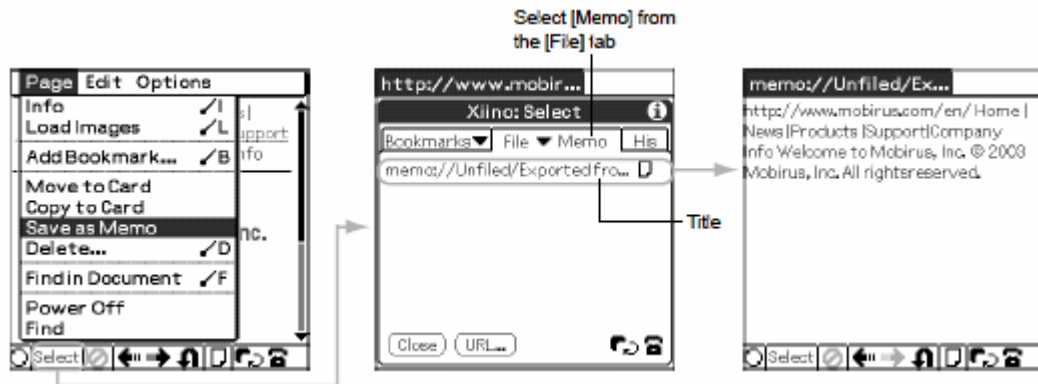
#### 4.3.1 Browse Memo

To display data stored in Memo on [Browse Screen] of Xiino, open [Selection Mode] and tap the memo title in the [Memo] list of the [File] tab. To display the [Memo] list, open [Selection Mode], tap the [File] tab, tap the down arrow, and select [Memo].



#### 4.3.2 Saving Web Pages in Memo

To save a web page in Memo, select [Save as Memo] from the [Page] menu while in [Browse] mode. A web page displayed in [Browse] mode is saved in Memo as text without images.



### 4.4 Preview Browsing ( Saving the communication cost for Browsing )

Use of this function will reduce the communication cost with volume-based pricing systems such as Smart Phone. Decreasing the received data amount also reduces the download time for the requested a Web page.

#### ( Preview Browsing method )

Set up [Image Quality] shown as Prefs Dialogs - Part1 of 2.5 Setting Xiino Functions (refer to P.8) as [Preview] 2. Consequently all images will be shown as grey scale. To display color images, download them by selecting [Load Images] from [Menu].

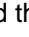
## 5 DATA MANAGEMENT

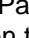
### 5.1 Viewing the Page Information

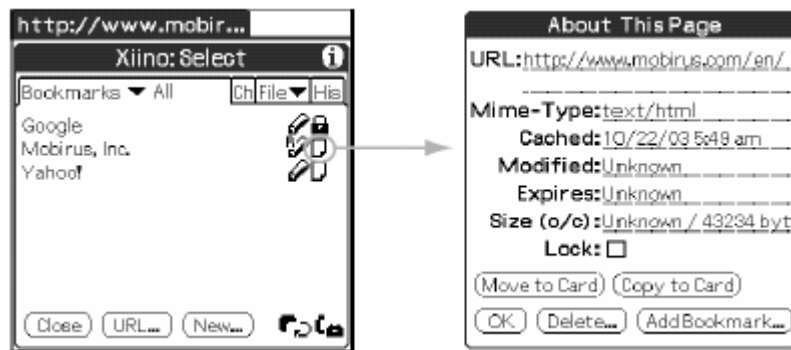
To view detailed information about a web page displayed on [Browse] screen and data stored in [Bookmarks] and [Cache], display the [About This Page] dialog.

#### 5.1.1 [About This Page] Dialog

To display the [About This Page] dialog, select the option [Info] from the [Page] menu.

You can also display the [About This Page] dialog by opening the [Selection Mode], tapping the [Bookmarks] tab or [History] tab, and then tapping the [Document] icon  on the right side of the list.

Or, you can display the [About This Page] dialog by opening [Selection Mode], tapping the [File] tab to select [Cache] option, and then tapping the [Document] icon  on the right side of the list.



**URL**

URL of this page. (You can edit this data.)

**Mime-Type**

Type of document this page contains.

**Cached**

Indicates the date and time at which this page was downloaded.

**Modified**

Indicates the date and time at which this page was last updated on the web.

**Expires**

Indicates the effective period of this page.

**Size (o/c)**

Amount of data in this page. Indicates the page size (o) and the amount used in cache (c).

**Lock**

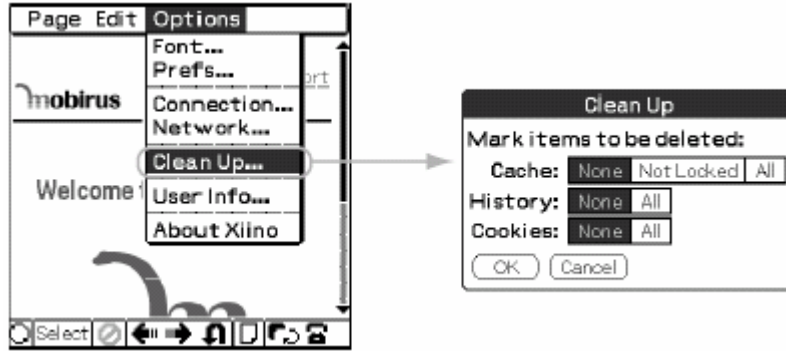
If this check box is marked, the page cannot be deleted from [Cache]

### 5.2 Memory Management

#### 5.2.1 Clearing the Internal Cache

You can delete all data of Xiino stored in your Palm™ device. To delete all data at one time, open the [Clean Up] dialog, specify the deletion conditions, and tap the [Delete] button.

To open the [Clean Up] dialog, select the option [Clean Up...] from the [Page] menu at the [Browse] screen.



You can delete three types of data – [Cache], [History] and [Cookies]. Tap the delete conditions for each data.

**Delete Conditions**

- None : No deletion. The data is not deleted and remains in memory.
- Not Locked : Deletes all data except data that is Locked.
- All : Deletes all data.

**5.3 Certificates**

**5.3.1 Adding a Certificate**

When an SSL website is being downloaded in Xiino resulting in encrypting the data, the "certificate" of the SSL website which proves to be safe is issued and stored in Xiino automatically.

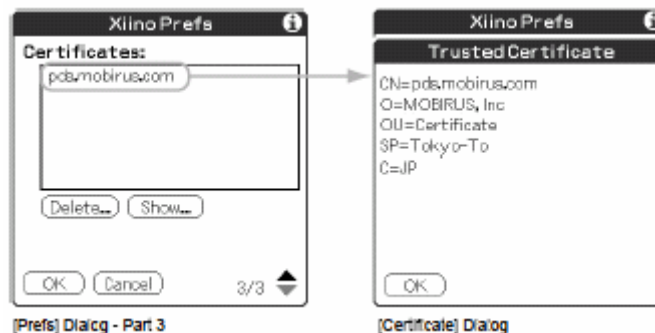
**5.3.2 Unrecognized Certificate**

When a web site that uses a security certificate is not recognized, a Security Alert dialog is indicated with the warning that Xiino DataServer could not be recognized. If the Security Alert dialog is ignored when still online, the "unrecognized certificate" is stored in Xiino. However, please be aware that the safety of communication is not secured nor guaranteed. To avoid the feeling of insecurity, delete the "unauthorized certificate".

**5.3.3 View Certificate**

To view the contents, go to the third page of the "Prefs" dialog screen as follows:

1. From the "Options" menu, select "Prefs...".
2. On the bottom right corner of the dialog screen, tap the upside down triangle until 3/3.
3. You will see a list of Certificates. Tap a certificate from the list, and then tap "Show..." button to display view the contents of the Certificate.





### 5.3.4 Deleting a Certificate

Delete a Certificate from Prefs Dialog 3 when an "unauthorized certificate" is stored.

1. From the "Options" menu, select "Prefs...".
2. On the bottom right corner of the dialog screen, tap the upside down triangle until 3/3.
3. You will see a list of Certificates. Tap a certificate from the list that you would like to delete, and then tap "Delete..." button.

## 6 Others

### 6.1 Trouble shooting

#### When Unable To Display Web Page

##### Web page does not display

**Cause:** Incorrect setting of the screen display.

**Solution:** Confirm the following items in the "Prefs" dialog box

\* "Image Quality": Change to "Best" or "Preview" if it is set to "Text Only"

\* "DataServer": enter pds.mobirus.com as the Image proxy server

To display the "Prefs" dialog box, tap the "Menu" button and select "Prefs" from the "Option" menu.

##### It takes a long time to load a web page.

**Cause:** The web site or the proxy server is congested..

**Solution:** Connect to another provider or access point. Or, try again later.

##### Web Pages are not loading.

**Cause:** The URL is not correct, or the URL does not exist.

**Solution:** Confirm the input data when you enter a URL form the "Open URL" dialog box.

The following symbols are easily mistaken:

\* carat [^] and tilde [~]

\* hyphen [-] and underscore [\_]

\* numerical zero [0] and alphabetical O [O]

When a URL is opened from "Bookmarks" or "Cache", it may not be displayed due to a change or deletion of the URL. Input the entire link again from the start of the URL, paying special attention to the domain ending (e.g. ~.com/ or ~.net/)

#### When Unable to Perform HotSync™

After making a line connection, you cannot perform HotSync™ with the PC

**Cause:** HotSync™ cannot be performed while there is a line connection.

**Solution:** If the telephone icon shows that there is a line connection, disconnect. In other cases, please refer to the operation manual of your Palm™ Device.

Please also check our FAQ pages at <http://www.mobirus.com/en/support/faq.html>

### 6.2 Further information

Please refer to our web site at <http://www.mobirus.com/en/> for further details.

## **7 End User License Agreement**

### END USER LICENSE AGREEMENT FOR XIINO™ SOFTWARE

Before using the following software and related software (hereinafter referred to as "Software"), please read the following documentation carefully.

Xiino 3.4E

Software and incorporated software in Software are protected by the Copyright Law, other intellectual property laws and international treaties. MOBIRUS™ Inc. (hereinafter referred to as "MOBIRUS") holds and owns the copyright and the right to license Software. Software includes third party's (hereinafter referred to as "Vendor") software that MOBIRUS has legitimately been granted a license to use.

The Software is licensed, not sold to you as long as you comply with the terms and conditions set forth in this Agreement. Please note that you are not permitted to use Software if you don't agree to any and all provisions of this Agreement.

#### **1. GRANT OF LICENSE**

MOBIRUS grants the right to use Software, in accordance to the provisions under this Agreement, to the first user who installs Software on a Personal Digital Assistant (hereinafter referred to as "PDA") or to the first user of the PDA on which Software is pre-installed.

#### **2. RESTRICTIONS**

2.1 You may install and use Software on only one PDA for ordinary use and in the form of object code.

2.2 You shall not make copies of Software in either electronic or hardware form except for initial installation on PDA, loading into temporary memory or peripheral devices for ordinary use, or making backup copies. You shall not install on two or more PDAs at the same time.

2.3 You shall not modify, translate or merge Software, analyze it by reverse engineering, decompile, disassemble, or create derivative works in any form or by any means from the object code of Software.

2.4 This license Agreement does not permit the use of MOBIRUS's trademark or service mark; therefore you may not remove, change or obscure MOBIRUS's indication or notice of copyright, trademark, or other proprietary rights.

#### **3. OTHER RIGHTS GRANTED**

You are not granted any patent, copyright, trademark, or other proprietary rights in whole or in part that MOBIRUS owns on Software, and shall not lease, transfer, distribute (including transmission through the Internet or other networks, and also recording on the servers connected to the networks to make such transmission possible), or sublicense Software to a third party.

#### **4. TRANSFER OF LICENSE**

4.1 You may transfer the right to use Software to a third party by assigning any and all rights and obligations under this Agreement and 1) transferring in whole all types of medium, all copies in any form and documentations, or 2) transferring them in part and completely destroying whatever was not transferred whether tangible or electrical. However, you agree and certify that Software will not be exported except as authorized and as permitted by the laws and regulations of the United States and other country in which you obtained Software and to which you intend to export and/or import the Software. The same rule shall apply to the next third party who is in line to receive the transferred right.

4.2 In no way shall the copyright notice be changed or removed from Software and documentation be transferred.

4.3 If any condition in this Article is not fulfilled, the transfer of the right shall not be in effect.

#### **5. TERM OF LICENSE**

Your first use of any part of Software shall be regarded as your acceptance of the terms and conditions under this Agreement and shall validate it at the same time.

#### **6. YOUR PERSONAL DATA**

You shall confirm and agree that MOBIRUS may access to your personal data you have provided and registered to the Web site from which you have downloaded the Software (hereinafter referred to as "Web site") to the extent of being necessary for MOBIRUS to provide you some kinds of services related to the Software. Web site may disclose such information to MOBIRUS and MOBIRUS may register it as its "Customer Information". Based on registered Customer Information, MOBIRUS may provide you support service and/or any other services specified by MOBIRUS. You may request to confirm, revise or delete your personal data registered to MOBIRUS, subject to proving your identification.

#### **7. LIMITED WARRANTY ON PAID-UP SOFTWARE**

MOBIRUS's warranty and liability on the Software you have paid up for shall be as follows:

7.1 MOBIRUS warrants that for a period of ninety (90) days from the date of delivery of the licensed Software, it will replace or repair within its discretion, the media and related documentations provided by MOBIRUS, if there are any defects on them.

THESE WARRANTIES REPLACE ALL OTHER WARRANTIES OR CONDITIONS, EXPRESS OR IMPLIED, INCLUDING, BUT NOT LIMITED TO, THE IMPLIED WARRANTIES AND CONDITIONS OF MERCHANTABILITY AND FITNESS FOR A PARTICULAR PURPOSE.

7.2 THIS SOFTWARE DOES NOT HOLD DURABILITY AGAINST PHYSICAL INCIDENTS OR MECHANICAL FAILURE AND IS NOT INTENDED FOR USE IN HIGHLY STABLE AND SECURE ENVIRONMENTS. MOBIRUS OR VENDOR DOES NOT WARRANT THAT; SOFTWARE WILL MEET EACH USER'S REQUIREMENTS; SOFTWARE INSTALLED ON PDA WILL WORK COMPLETELY WITH OTHER INSTALLED SOFTWARE ON SUCH PDA; OPERATION OF SOFTWARE WILL BE UNINTERRUPTED; DURING CONNECTION WITH THE INTERNET OR OTHER NETWORKS, SOFTWARE WILL BE ERROR-FREE AND WILL NOT DAMAGE HARDWARE, SOFTWARE, AND DATA CONNECTED WITH SUCH NETWORKS; OR SOFTWARE WILL NOT EFFECT YOUR OR THIRD PARTY'S ELECTRONIC INFORMATION IN ANY WAY.

7.3 IN NO EVENT SHALL MOBIRUS NOR VENDOR BE LIABLE FOR ANY SPECIAL, INCIDENTAL, CONSEQUENTIAL, OR INDIRECT DAMAGES, INCLUDING, WITHOUT LIMITATION, DAMAGES FOR LOSS OF BUSINESS PROFITS, BUSINESS INTERRUPTION, LOSS OF BUSINESS INFORMATION/DATA, OR ANY OTHER PECUNIARY LOSS ARISING OUT OF THE DISTRIBUTION, INSTALLATION, MAINTENANCE, USE OR INABILITY TO USE INCLUDING THE INTERRUPTION OF SOFTWARE IMPLEMENTATION RELATED TO THIS AGREEMENT. IN NO EVENT SHALL MOBIRUS'S NOR VENDOR'S TOTAL LIABILITY TO YOU FOR ALL DAMAGES, LOSSES, AND CAUSES OF ACTION (WHETHER IN CONTRACT, TORT, OR OTHERWISE) EXCEED THE AMOUNT OF LICENSE FEE PAID BY YOU FOR THE SOFTWARE, PROVIDED THAT SUCH LIMITATION OF LIABILITY MAY NOT APPLY TO YOU IF THE DAMAGES, LOSSES OR CAUSES OF ACTION WHICH ARE CAUSED BY INTENTIONAL ACT OR GROSS NEGLIGENCE OF MOBIRUS OR VENDOR.

7.4 MOBIRUS or Web site may provide you some additional free services including information transmission service through MOBIRUS the server managed by MOBIRUS or Web site. IN THIS CASE, MOBIRUS AND/OR WEB SITE SHALL NOT WARRANT ANYTHING RELATED TO SUCH SERVICES AND SHALL NOT BE LIABLE FOR ANY SPECIAL, INCIDENTAL, CONSEQUENTIAL, OR INDIRECT DAMAGES OR LOSS OF PROFITS, CAUSED BY OR RELATED TO THE SERVICES, PROVIDED THAT THE DAMAGES OR LOSSES ARE NOT CAUSED BY INTENTIONAL ACT OR GROSS NEGLIGENCE OF MOBIRUS OR WEB SITE.

#### 8. LIMITED WARRANTY DURING TRIAL USE TERM

MOBIRUS's warranty and liability during the trial use term of the Software shall be as follows:

8.1 User support by MOBIRUS shall not be available.

8.2 MOBIRUS SHALL NOT WARRANT ANYTHING RELATED TO THE SOFTWARE, WHETHER EXPRESS OR IMPLIED.

8.3 IN NO EVENT SHALL MOBIRUS BE LIABLE FOR ANY SPECIAL, INCIDENTAL, CONSEQUENTIAL, OR INDIRECT DAMAGES OR DAMAGES FOR LOSS OF BUSINESS PROFITS ARISING OUT OF THE DISTRIBUTION, INSTALLATION, MAINTENANCE, USE OR INABILITY TO USE INCLUDING INTERRUPTION OF SOFTWARE IMPLEMENTATION OR RELATED TO THIS AGREEMENT, PROVIDED THAT THE DAMAGES OR LOSSES ARE NOT CAUSED BY INTENTIONAL ACT OR GROSS NEGLIGENCE OF MOBIRUS.

8.4 MOBIRUS or Web site may provide you some additional free services including information transmission service through the MOBIRUS server managed by MOBIRUS or WEB Site. IN THIS CASE, MOBIRUS AND/OR WEB SITE SHALL NOT WARRANT ANYTHING RELATED TO SUCH SERVICES AND SHALL NOT BE LIABLE FOR ANY SPECIAL, INCIDENTAL, CONSEQUENTIAL, OR INDIRECT DAMAGES OR LOSS OF BUSINESS PROFIT CAUSED BY OR RELATED TO THE SERVICES, PROVIDED THAT THE DAMAGES OR LOSSES ARE NOT CAUSED BY INTENTIONAL ACT OR GROSS NEGLIGENCE OF MOBIRUS OR WEB SITE.

#### 9. TERMINATION OF LICENSE

9.1 This Agreement and your rights hereunder shall automatically terminate if and when you 1) fail to comply with any provision of this Agreement, 2) transfer the right to use Software to a third party according to this Agreement, or 3) destroy Software and all its copies and related documentation.

Upon termination, you shall cease any and all use of Software and destroy all copies including written documentation and modified copies, if any.

9.2 MOBIRUS may provide you free upgrade version of the Software (minor change version having the same integer version number as the original version) subject to your registration to MOBIRUS. In this case your license on the old version of the Software will terminate at the time when you agree END USER LICENSE AGREEMENT for upgrade version by way of acquiring and commencing the use of it. After that you shall not use or transfer the old version and you shall destroy any and all old version and its manual.

#### 10. RIGHTS AGAINST INFRINGEMENT

In the event you are reasonably assumed to have infringed any provision under this Agreement, MOBIRUS shall reserve the right to 1) make an on-site-search of the premises, where you are reasonably assumed to hold any media or copies of Software, to find any facts related to the infringement, and 2) browse, make copies and/or take photos of the related materials.

On finding the fact of your infringement, MOBIRUS shall have the right to prohibit your use of Software and claim the indemnity for any direct or indirect damages incurred by the infringement.

MOBIRUS shall not be liable for any property or psychological damages to you resulting from the search, even if your infringement is not found.

#### 11. GOVERNING LAW AND PRIMARY COURT

This Agreement shall be governed and construed in accordance with Japanese laws. MOBIRUS and you submit to the non-exclusive jurisdiction of the Tokyo District Court in Japan with respect to all dispute arising from the interpretation and performance of this Agreement, wherever the parties' venues or places of disputes are located and regardless to the amount in dispute. Each party hereby agrees to waive its right to demand a jury trial for any cause of action.

### 12. AMENDMENT

MOBIRUS may notify you the amendment of this Agreement by sending E-mail or any other appropriate means. In such case, the offered amendment shall be regarded as accepted by you unless you make any objection in writing no later than fourteen (14) days after receipt of MOBIRUS's notification.

### 13. SERVERABILITY

Should any provision of this Agreement be or become illegal, invalid or unenforceable, the legality, validity, and enforceability of the remaining provisions of this Agreement shall not be affected or impaired thereby.

### 14. ENTIRE AGREEMENT

This Agreement is the entire Agreement to date between you and MOBIRUS, and supersedes any such prior written or oral agreement regarding Software.

### 15 US GOVERNMENT RESTRICTED RIGHTS

If Software is acquired under the terms of a proposal or agreement with the United States Government or any contractor thereof, Software is subject to the following: (a) For acquisition by or on behalf of civilian agencies, as necessary to obtain protection as "commercial computer software" and related documentation in accordance with the terms of this Commercial Software Agreement as specified in 48 C.F.R. 12.212 of the Federal Acquisition Regulations and its successors; (b) For acquisition by or on behalf of units of the Department of Defense ("DOD") as necessary to obtain protection as "commercial computer software" and related documentation in accordance with the terms of this commercial computer software license as specified in 48 C.F.R. 227-7202-2 of the DOD F.A.R. Supplement and its successors.

-----  
Palm™ is a registered trademark of Palm Inc.