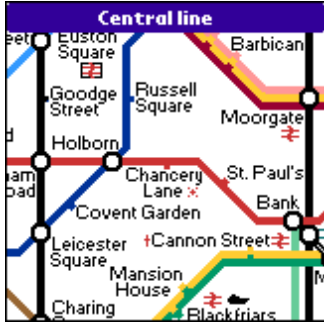


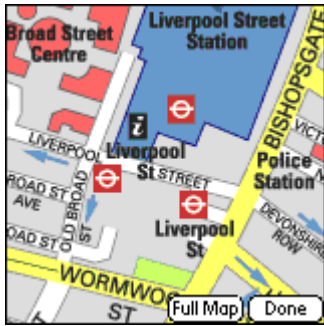
## Tube

[www.visualit.co.uk](http://www.visualit.co.uk)

### Overview



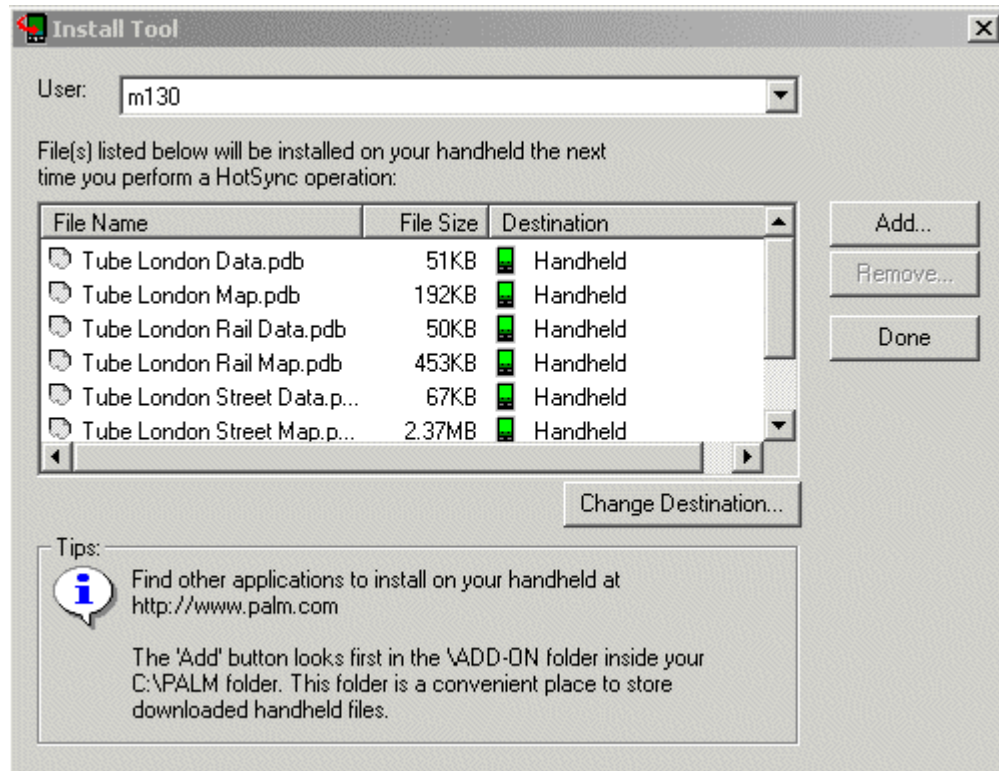
Tube is an application that assists you to use the metro, subway or underground transport system in major cities throughout the world. Tube allows the user to view and scroll around a map, locate any station on the map, plan a journey by selecting the starting and ending stations and have Tube calculate the shortest route. The route can be displayed as a list of directions in text or graphically as an animated display. In situations where a station or complete line are out of service the user can select to avoid this station or line and Tube will calculate an alternative route.



Pro versions of Tube also come with a superb integrated street level map of the central city area. These maps have a find feature that enables you to quickly find any street, place of interest or station on the map. This street level map is also integrated with the subway/metro map so you can quickly view the stations street location when using the tube map. Please note route planning is not possible between street locations. Some Pro version may also come with additional reference map of other rail systems in the area. These again have quick find features but may not be provided with route planning.

## Installation Instructions

- The zip file you downloaded will contain a Tube.prc and several .pdb files: Extract all these files to a folder of your choice on your desktop PC.
- Open the folder you extracted the files to and locate the Tube.prc and .pdb files.
- Click on the Tube.prc and ALL of the pdb files in turn to add them to your Palm install tool. If you wish to install the maps to a storage card or memory stick click on the change destination button and move the pdb files over. For best performance leave the Tube.prc file in main memory.



- Ensure you have selected the correct user for the device you are installing to.
- Place your Palm device in its cradle and hotsync to install across.
- After syncing, the Tube icon appears on your Palm. Select it by pressing the Palm 'Home' button, and making sure the category your viewing is 'All'.
- If you have any problems using the application check your hotsync log to ensure no errors were reported during the install.

## Storage Card Notes

If you are installing any of the files to the expansion card they must reside in one of the following directories, If you use Palm's install tool to install to your expansion card then the files will automatically be installed to the correct directory.

### -- Common Palm folders

/PALM/Launcher/

/PALM/

/PALM/Programs/

### -- PiDirect/MemPlug directories

/PALM/PiDirect/

### -- MS/Sony Clie directories

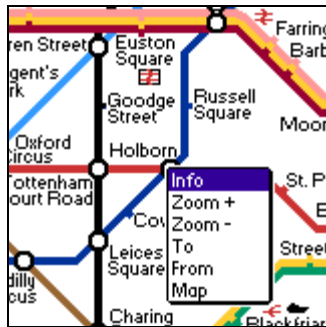
/PALM/Programs/MSFiles/

/PALM/Programs/MSMount/

## Instructions on using the application.

### Menus

Two menus lists can be accessed within Tube:

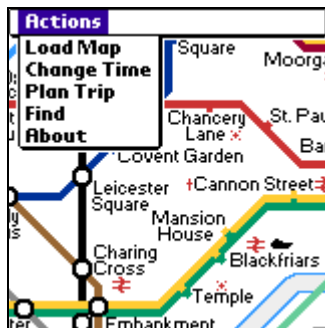


#### Shortcut Menu

When viewing the map you can access a shortcut menu of Tubes most popular features, simply by holding down on a point on the map for 1+ secs. The menu gives you a choice of getting station information, planning a trip to or from the closest station, or using the zoom feature. Also on the menu is a 'Map' option. This can be used with Pro versions of Tube to display a street map of the area surrounding the selected tube station.



#### Actions menu list



To access the additional Tube options click the menu button to the left of the Graffiti area, whenever you are viewing a map.

## [Load Map](#)

When Tube is first started it detects the databases that are available and will display a dialogue box allowing the user to select the map to load. Some databases contain information for different times of the day or week and a second dialogue will ask you to select the time you wish to travel.

The current map can be changed at any time by selecting Load Map from the Actions menu list and selecting the map from the dialogue box.

If the selected map is not installed on the device a dialogue message will appear telling you the file, or files, to install for that map.

If the 'Auto load map on start up' box is ticked, then the next time Tube is loaded the last map that was loaded will automatically load, at the last position viewed.

## [Change Time](#)

Some maps contain different databases for different times of day or days of the week.

Access the Actions menu list and select > Change Time option to change the time you wish to travel with the currently loaded map.

Please note this option is disabled for maps that do not contain time dependent information.

## [Find Station](#)

Use this menu to find any station on the current map. Access the Actions menu list and select > Find Station and then from the dialogue box select the station you are looking. The selected station will be scrolled into view and a circle drawn around it.

## [Plan Trip](#)

Use this menu item to plan a journey and have Tube calculate the shortest route. Access the Actions menu list and select > Plan Trip then from the displayed dialogue box select the From and To stations. Click List to get a list of instructions that describe the route or click Show to be shown graphically the route to take.

If a station or complete line is out of service you can click the Options button to display a dialogue box that allows you to select a station and line to avoid.

To cancel a trip during animation, hold the stylus down on the map.

## [Viewing the Map](#)

Moving around the map - Touch the stylus on the map and while holding it down drag the map in the direction you wish to move it.

## [Zooming in and out](#)

To zoom in and out use the hardware up and down buttons. These are usually found below the grafitti area.

## No Maps Available

For each map you must install a data file, and a map file. If there are no maps available for selection, you need to install the data files for at least one map. If you can select a map but then see the message: 'Can't find map. Please install one of the following files: someFileName.Pdb'

You need to install at least one of the files listed.

For example, to install the files for London you need to install 'TubLONtM.pdb', and 'TubLONtD.pdb' onto your device.

To install files you need to locate them on you Desktop machine. Then double click the desired file and follow the HotSync instructions.

## Sony Clie Users

If you have a Sony Clie device you will be able to run Tube in high resolution mode. To do this access the Actions menu list and select Sony Hi Res from the menu. You can then toggle high resolution with the check box displayed.

## Support

If you have any problems installing or using the application please check our support pages on our web site [www.visualit.co.uk/support.htm](http://www.visualit.co.uk/support.htm)

## Updates

Updates to the latest tube engine can be found on our web site [www.visualit.co.uk/downloads.htm](http://www.visualit.co.uk/downloads.htm)

If an updated map or database is released for a city you should receive an email on how to obtain the latest version.